

# SKW10

## Flat Level Probe



VP-SKW10-EN

### Description

SKW10 is an insulated flat level probe for level monitoring of conductive liquids in pressureless vessels. Together with a conductive level controller, the probe is suitable for controlling and monitoring levels and limit values (e.g. dry or overflow protection) of electrically conductive liquids.

### Advantages / features

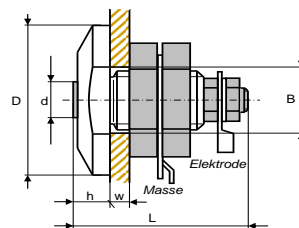
- Lateral installation in metallic tanks
- Use in the food industry, metal parts made of stainless steel V4A

### Application examples

- Pasta cooker
- Bain marie
- Water tank

### Technical Specifications (subject to modifications)

Dimensions (D x L)	25 x 25 mm
Material Screw-in body	PVDF (FDA compliant)
Electrode material	V4A
Operating temperature	-30...100 °C



Diameter drill hole (B)	10.5 mm
Installation height (h)	5 mm
Screw-in body	M10
Electrodes	M4
Electrode diameter (d)	6 mm
Wall thickness (w)	max. 3 mm
Electrode connection	cab le lug
Connection ground	soldering lug

### Models

Standard	A91190200
----------	-----------